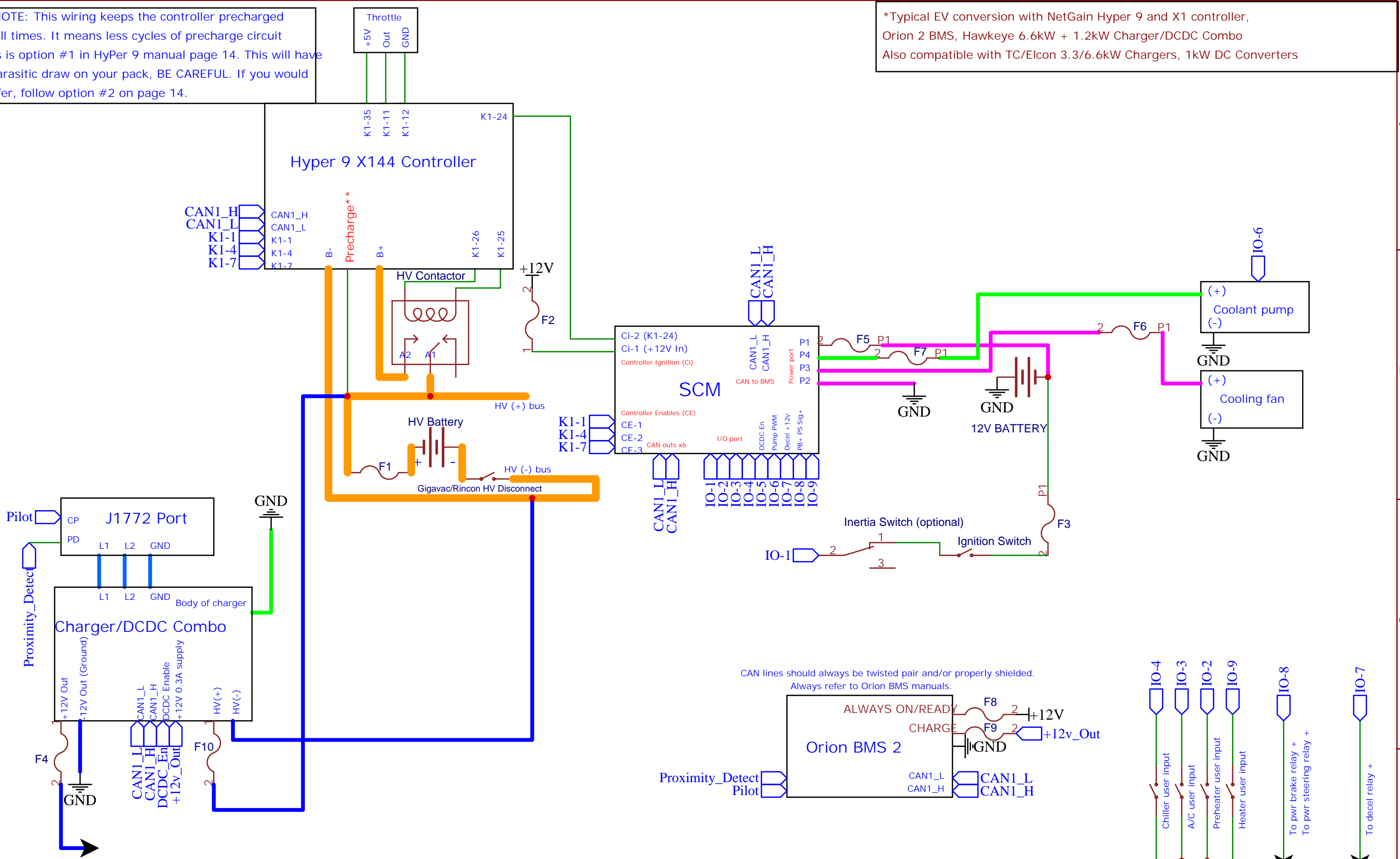



****NOTE:** This wiring keeps the controller precharged at all times. It means less cycles of precharge circuit. This is option #1 in HyPer 9 manual page 14. This will have a parasitic draw on your pack, BE CAREFUL. If you would prefer, follow option #2 on page 14.

*Typical EV conversion with NetGain Hyper 9 and X1 controller, Orion 2 BMS, Hawkeye 6.6kW + 1.2kW Charger/DCDC Combo. Also compatible with TC/Elcon 3.3/6.6kW Chargers, 1kW DC Converters



CAN lines should always be twisted pair and/or properly shielded. Always refer to Orion BMS manuals.

| Fuses | Wire gauge |
|--------------------------------|------------------------|
| F1 = 500VDC 400A | 18 AWG |
| F2 = 10A | 16 AWG |
| F3 = 5A | 12 AWG |
| F4 = 100A (or circuit breaker) | 10 AWG |
| F5 = 30A | 6 AWG |
| F6 = 25A | 2/0 AWG (Orange cable) |
| F7 = 15A | |
| F8 = 5A (Check BMS manuals) | |
| F9 = 5A (Check BMS manuals) | |
| F10 = 500VDC 75A (recommended) | |

| | | |
|---|---|-------------------------------|
| TITLE: EV Conversion with SCM2 X144 Controller (144V) | | REV: 2.01 |
|  | Company: Hawkeye Innovations LLC | |
| | Date: 4/5/2024 | Drawn By: Adam Lansing |
| | | Sheet: 1/1 |

